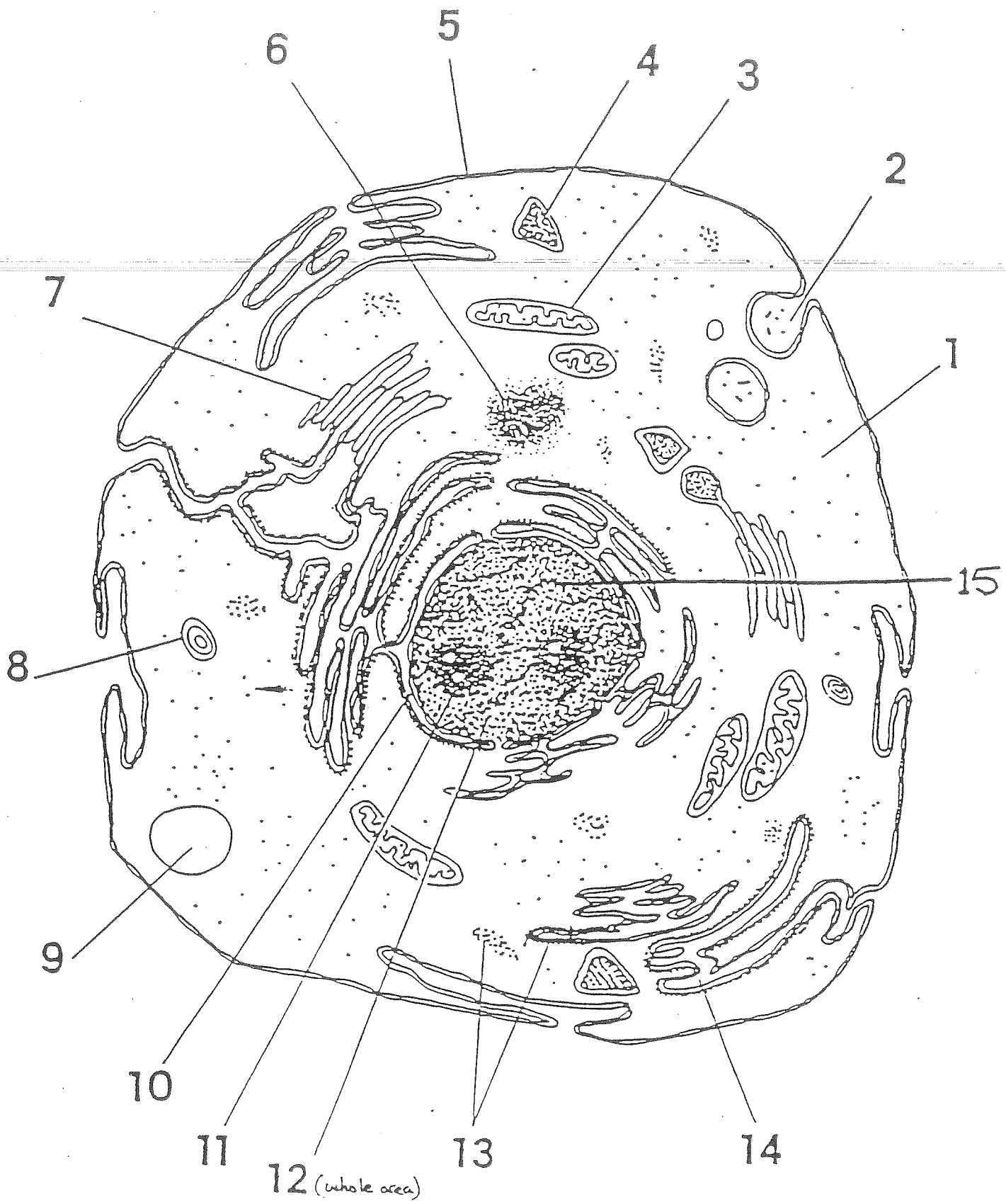
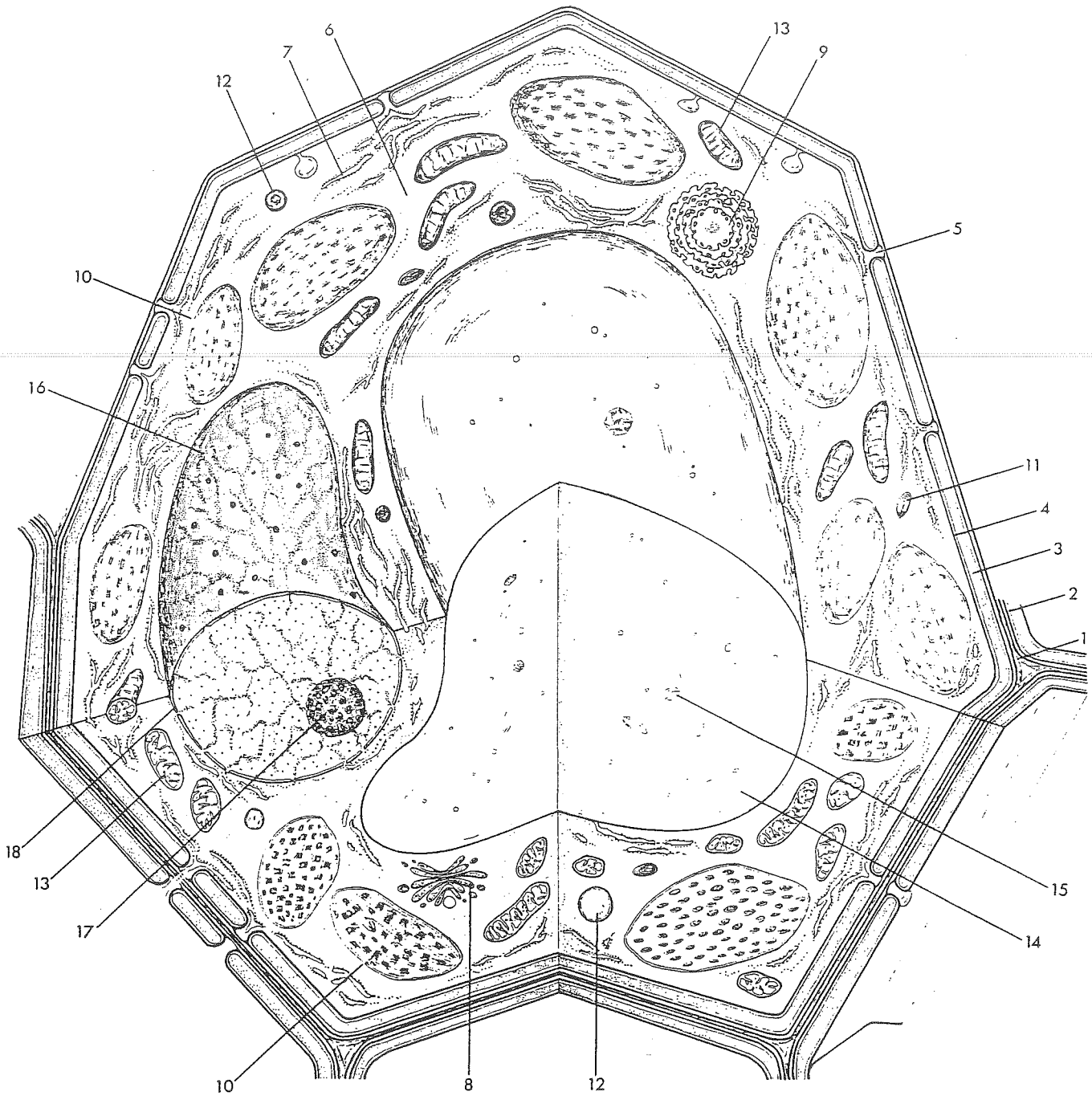


Name _____
Date _____



TYPICAL ANIMAL CELL

GENERALIZED PLANT CELL



- | | |
|--------------------------|--------------------------|
| 1. Middle lamella | 10. Chloroplast |
| 2. Primary cell wall | 11. Starch grain |
| 3. Secondary cell wall | 12. Carotene chromoplast |
| 4. Cell membrane | 13. Mitochondria |
| 5. Pit | 14. Vacuole |
| 6. Cytoplasm | 15. Crystal |
| 7. Endoplasmic reticulum | 16. Nucleus |
| 8. Golgi body (section) | 17. Nucleolus |
| 9. Golgi body | 18. Nuclear membrane |

Carolina Biological Supply Company, Burlington, North Carolina 27215

Carolina Biological Supply Company, Powell Laboratories Division, Gladstone, Oregon 97027

Printed in U.S.A. © 1966 Carolina Biological Supply Company

Review Sheet
69

